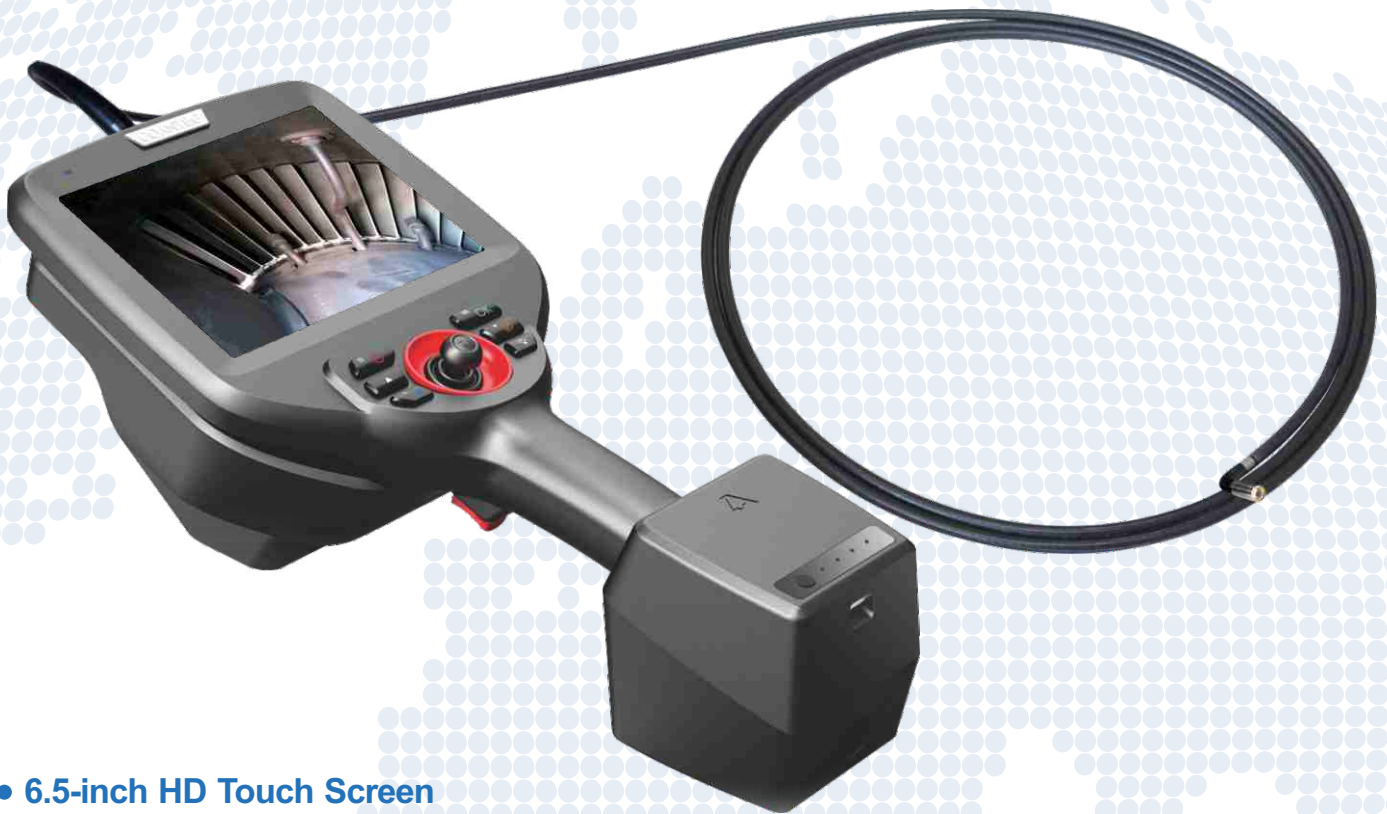


# Coantec C65 series 3D Measurement High Definition Industrial Videoscope



- 6.5-inch HD Touch Screen
- HD Industrial Camera
- Accurate 3D Measurement Function
- Replaceable Insertion Tube System
- 360°All-way Articulation Probe
- Rear-mounted LED Optical Fiber Light Guide
- C Gesture Image Auto Flip Function
- Image File Processing Function

## SHENZHEN COANTEC AUTOMATION TECHNOLOGY CO.,LTD.

No.3, Crosslane 3, Yuanhu Road, Zhangbei,Ailian,Longgang District, Shenzhen, China,518172

Tel : +86 -755- 8972 8626 Fax : +86 -755- 8978 6196

E-mail : zyd@chinavideoscope.com Web : www.chinavideoscope.com



YouTube



Facebook



Coantec Website




## Product Introduction

The C65 series is a high-definition industrial video endoscope that can be used for 3D measurement after years of careful research and development by Coantec. The product uses a 6.5-inch high-definition touch screen, 720P high-definition industrial camera, and excellent image sensing technology, which comprehensively improves the clarity of the image, restores the color of the measured object to a greater extent. It can realize the precise measurement functions of point-to-point, point-to-line, point-to-surface, depth, and area, and took the lead in breaking the long-term foreign monopoly on this technology. The joystick uses a single-touch electric control method, which greatly improves the positioning ability of the probe. It can be used in many fields such as aerospace, automobile manufacturing, precision casting, railway, shipbuilding, energy, electricity and so on.




### 3D Measurement Function

The user can measure the appearance size of the object in many ways, such as point-to-point, point-to-line, point-to-surface, multi-line segment, and area. The measurement resolution is 0.01mm and the measurement error is less than 5%.



Cancel Save Return	Display	Measuring mode
	<input type="radio"/> Right	<input type="radio"/> Point-Point <input type="radio"/> Point-Line
	<input type="radio"/> Parallax	<input type="radio"/> Point-Plane <input type="radio"/> Multi-segmer
	<input type="radio"/> 3D	<input type="radio"/> Areal
		OK

Point-to-point Measurement



Cancel Save Return	Display	Measuring mode
	<input type="radio"/> Right	<input type="radio"/> Point-Point <input type="radio"/> Point-Line
	<input type="radio"/> Parallax	<input type="radio"/> Point-Plane <input type="radio"/> Multi-segmer
	<input type="radio"/> 3D	<input type="radio"/> Areal
		OK

Point-to-line Measurement



Cancel Save Return	Display	Measuring mode
	<input type="radio"/> Right	<input type="radio"/> Point-Point <input type="radio"/> Point-Line
	<input type="radio"/> Parallax	<input type="radio"/> Point-Plane <input type="radio"/> Multi-segmer
	<input type="radio"/> 3D	<input type="radio"/> Areal
		OK

Multi-line Measurement



Cancel Save Return	Display	Measuring mode
	<input type="radio"/> Right	<input type="radio"/> Point-Point <input type="radio"/> Point-Line
	<input type="radio"/> Parallax	<input type="radio"/> Point-Plane <input type="radio"/> Multi-segmer
	<input type="radio"/> 3D	<input type="radio"/> Areal
		OK

Area Measurement

## Product Introduction

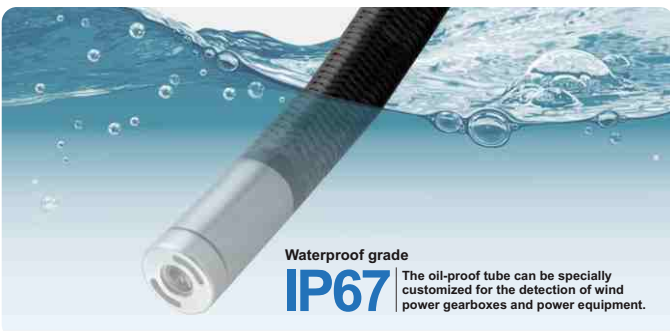
### High Quality Image

It adopts 6.5-inch high-definition touch screen, megapixel high-definition industrial camera and high color reproduction, which makes the image quality clear and delicate, effectively observing the subtle defects inside the object.



### 360° All-way Articulation Probe

The probe is made of alloy material, 360° all-way articulation, dustproof and waterproof grade up to IP67, strong corrosion resistance, more wear-resistant, custom-made oil-proof series, suitable for more severe testing environments.



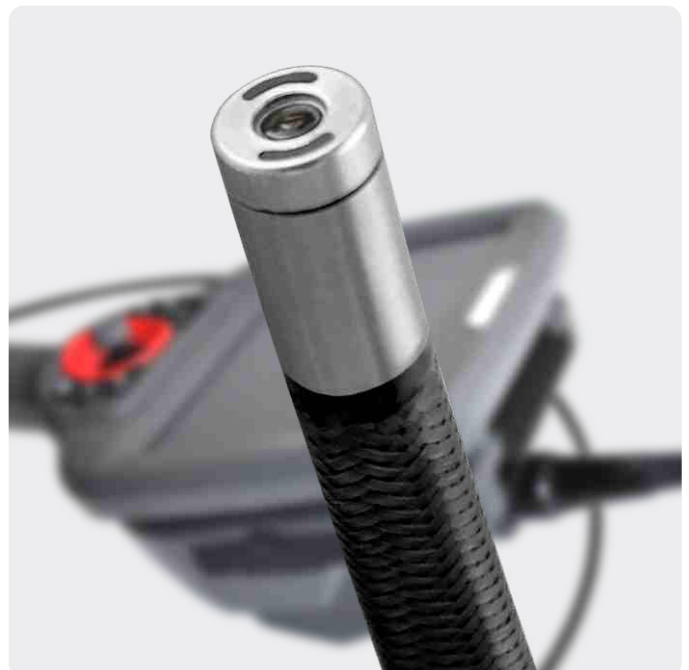
### Replaceable Insertion Tube System

Users can quickly replace insertion tubes of different diameters, lengths and depths of field according to the situation, realizing multiple functions in one machine and meeting more field needs.



### Rear-mounted LED Optical Fiber Light Guide

The use of rear-mounted LED optical fiber light guide lighting has higher brightness and better sealing performance, which effectively extends the service life of the probe.



## Product Introduction

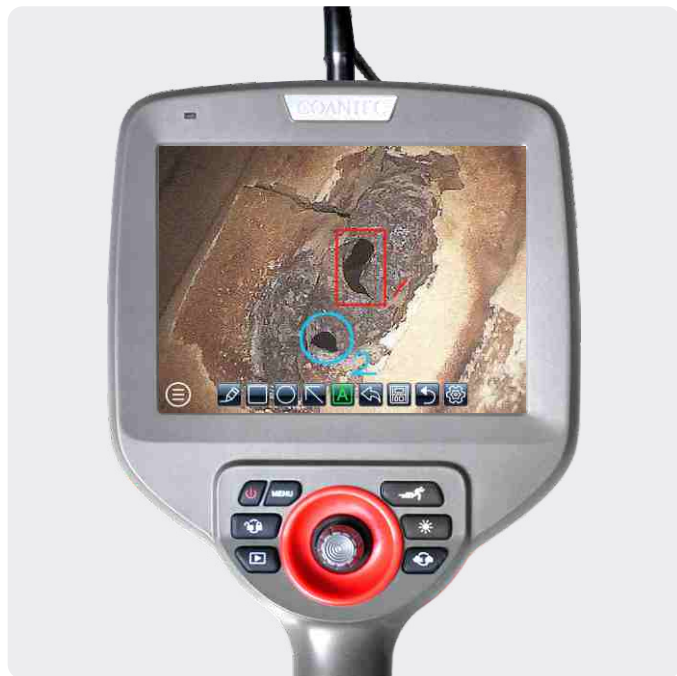
### C Gesture Image Auto Flip Function

Equipped with G-sensor, the picture can be automatically flipped through the C gesture, so that the image is always at the best viewing angle of the inspector.



### Image File Processing Function

Users can zoom in, zoom out, restore, delete, rename files, add watermarks, do graffiti and other operations on the picture. In the graffiti interface, you can set the brush and character format, add text and graphic notes.



### Easy Operation, Improved Efficiency

Adopting a new humanized user interface design, more tactile physical buttons and sensitive touch buttons, with a zero-delay electric control joystick, which makes it smooth movement, precise positioning, labor-saving operation, and effectively improve detection efficiency.



### Lightweight, Portable and Durable

The host adopts a lighter design and is equipped with a quick-release special shoulder strap, which is more convenient to carry and operate, and fully reduces the burden on the inspectors. The ergonomically designed handle is easy to hold and manipulate. Equipped with a dedicated instrument case, shockproof and impact resistant, more robust and durable.



# System Parameters

## Technical Specification

Host	
Display	6.5-inch HD Touch Screen
Display Resolution	1024*768
User Interface	Menu navigation by using touch screen, physical keys and joystick
Image Zoom	Support real-time 5 times zoom, 8 times zoom when playback
LED Brightness Level	0-9 level adjustment
Screen Backlight Brightness	Adjustable
Photo/Video Function	With photo and video functions, can be captured during recording
File Format	Image:JPEG/BMP;Video:MP4
Image Flip	0°/90°/180°/270°
Image Preview	List preview, full-screen viewing/deleting files/adding time watermark
C Gesture Function	With C gesture image automatic flip function
Real-time Noise Reduction	Real-time noise reduction function to improve image quality
Text Annotation	Full screen text, graffiti overlay
Graphic Annotation	Arrow, box, circle mark
Memory	Standard 32G TF Card
Menu Language	Simplified Chinese, Traditional Chinese, English, Japanese, Korean, French, German, Portuguese, Spanish, Russian, Italian, Dutch and more than ten languages
Output Port	MiniHDMI
Auxiliary Measurement Function	Cross cursor
3D Measurement Function	Point to point, point to line, point to surface, depth, area measurement function
Measurement Resolution	0.01mm
Measurement Deviation	≤5%
System Security Protection	Password lock protection
Host Size	408mm*182mm*178mm
Package Dimensions	560mm*355mm*230mm
Host Weight	2.8kg (With battery)

Tube	
Probe Diameter(±0.1mm)	Φ6 Φ4
Probe Material	Tungsten alloy wire wear-resistant braided tube
Camera Pixel	1,000,000
View Direction	Forward view/Side view
Depth of Field	5-50mm
Field of View	70°
Lighting Mode	Rear-mounted LED lights,optical fiber light guiding
Joystick Control	360° all-way articulation
Unidirectional Bending Angle	≥120°
Joystick Control	Electric control
Lock Function	Yes
Step Function	Step fast and slow movement under locking status
Compatibility	Replaceable Insertion tube
Probe Waterproof Level	IP67
Power	
Power Adapter	15V 4A
Battery Capacity	11.1V , 6600mAh
Working Time	≥4 hours
Operation Environment	
Machine Operating Temperature	-10°C-50°C
Probe Operating Temperature	-20°C-60°C
Storage Temperature	-20°C-60°C
Relative Humidity	15%-90%
Configurations	
Standard Configurations	C65 Videoscope×1,High-end Instrument Case (with tube storage device)×1, Card Reader ×1,32G TF Memory Card×1,Rechargeable Lithium Battery×2,Charger×1,User Manual×1
Optional Configurations	Mini HDMI Cable,Handheld Tube, Pipe Centralizer

## Application Field

This product can be widely used in inspections of many fields such as aerospace, special inspection industries, energy and power, automotive aftermarket, automobile manufacturing, shipbuilding, rail transit, petrochemicals, food and drug machinery, mold casting, machining, construction engineering, police safety, military equipment, municipal pipelines, universities and research institutes.

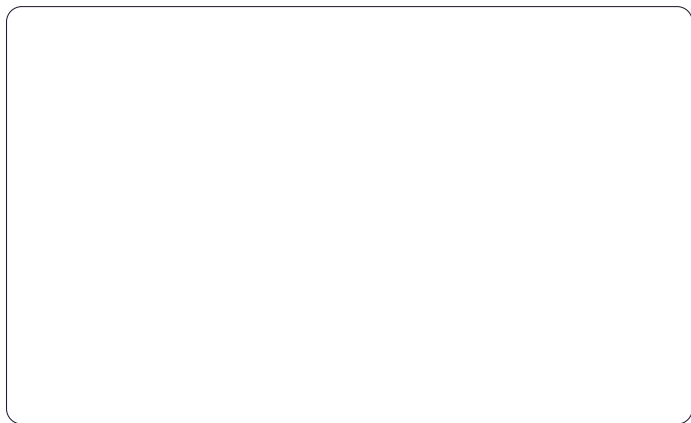
## Customized Services

We provide more customized services,we can add the functions according to your request:

- 1.Tube length, diameter and lighting mode can be customized
- 2.Can add scale ruler on the tube
- 3.Software function customization

For more customized solutions, please contact us.

## Distributor



If the technical parameters are changed, please refer to the actual products, there will be no prior notice. All products are trademarks or registered trademarks of the owner of products.